

Diaphragm seals flanged types

Model DF22

ASME B40.100

Features

- Removable diaphragm seal capsule
- Metal diaphragms with Teflon gasket
- Removable top and bottom housing
- Variety of wetted parts materials

Pressure rating

From 150 lbs up to 1500 lbs

From PN6 up to PN100

Applications

Chemical and petrochemical industry

Machine and apparatus construction

Offshore installations

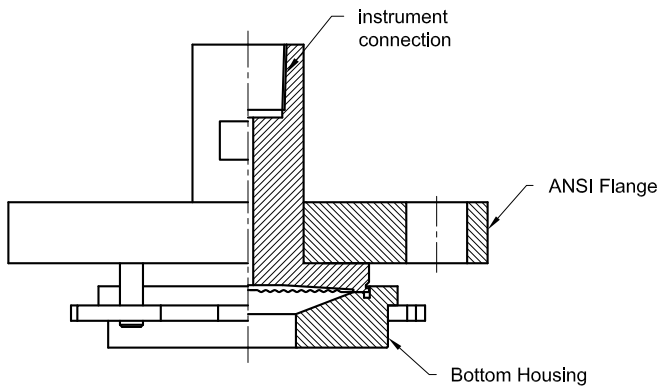
Pulp and paper industry

Waste water treatment

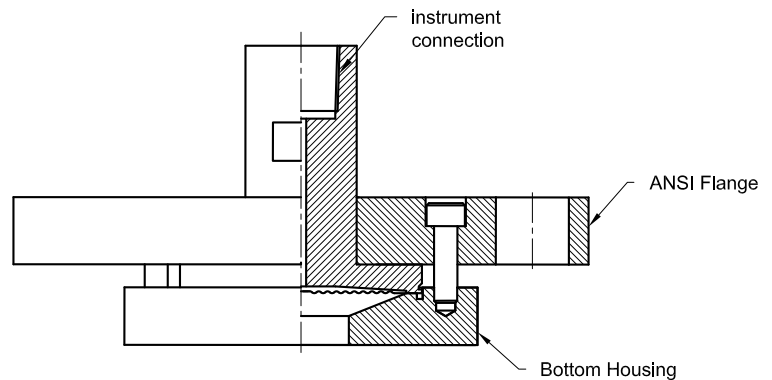


Technical specification	DF22
Process connection size, flanged	
ASME B16.5	ANSI 1", 1.5", 2", 3"
EN 1092-1	DIN DN25, DN40, DN50, DN80, others on request
Rating	ANSI 150 lbs, 300 lbs, 600 lbs, 900 lbs, 1500 lbs
	DIN PN10, PN16, PN25, PN40, PN64, PN100, others on request
Construction	Bolted top and bottom housing, removable for easy maintenance
Fill port	At the side with stainless steel ball and set screw
Flushing connection	Optional flushing
Flushing connection size	1/4" 1/2" NPT female
Maximum pressure	
Metal bottom housing [lbs/PN]	1500/100
Other bottom housing [lbs/PN]	150/10
Measuring principle	Diaphragm
Instrument connections [female]	1/4" NPT, 3/8" BSP, 1/2" NPT, others on request
Material (wetted parts)	
Bottom housing	Stainless steel 316L, 316L with Teflon protection, Hastelloy, Monel, Inconel, Incoloy
Diaphragm	Stainless steel 316L, 304L, Carpenter 20, Hastelloy B, Hastelloy C, Nickel, K-Monel, Tantalum, 316L with Teflon protection
Material (non wetted parts)	
Top housing	Stainless steel 304, 316
Holding Flange (back-up Flange)	Carbon Steel, optional Stainless steel 304, Stainless steel 316
Clamp rings	Steel painted black, optional stainless steel
Bolts and nuts	Stainless steel 300 series
Accuracy	Additional 0,5 % to the specified tolerance of the mounted instrument
Filling liquids (temperature range)	Glycerin (0/400 °F, -18/204 °C), Silicone (-40/600 °F, -40/315 °C), Halocarbon (-70/300 °F, -56/149 °C), Syltherm 800 (-40/750 °F, -40/400 °C), Vegetable oil (32/248 °F, 0/120 °C), Food grade silicone (-13/400 °F, -25/200 °C), Others on request, also depending on selected material and configuration.
Mounting	Direct or with capillary
Accessories, options	NACE, pressure gauges, pressure switches, transducers, capillaries

General dimensions in mm



For Flange 1" & 1.5"



For Flange 2" & 3"

Order information

Process connection	Type	Diaphragm	Bottom housing material	Instrument connection	Rating	Flange facing	Filling fluid	Options
ANSI Flanged (10) 1" (15) 1 1/2" (20) 2" (30) 3"	DF22	(S) 316L	(L) 316L	(02T) 1/4" NPT(F)	ANSI (150) 150 lbs	(RF) Raised face ²⁾	(CG) Glycerin (direct mounted, -18/204 °C)	(NH) Tagging wired
		(C) 304L	(SP) 316 with teflon lined ¹⁾	(14T) 3/8" BSP(F)	(300) 300 lbs		(CK) Silicone (direct mounted or with capillary, -40/315 °C)	(OF) Oil free (only filled with halocarbon)
		(D) Carpenter 20	(H) Hastelloy C	(04T) 1/2" NPT(F)	(600) 600 lbs		(CF) Halocarbon (direct mounted or with capillary, -56/149 °C)	(YT) Stainless steel 316 top housing
		(G) Hastelloy B	(M) Monel	(900) 900 lbs	(1500) 1500 lbs		(HA) Syltherm 800 (direct mounted or with capillary, -40/400 °C)	(SE) Stainless steel clamp rings
		(H) Hastelloy C	(I6) Inconel 600	(1500) 1500 lbs			(GZ) Vegetable oil (direct mounted or with capillary, 0/120 °C)	(BFC) SS 304 Backup Flange
DIN Flanged (DN25) (DN40) (DN50) (DN80)	DF22	(N) Nickel	(I8) Incoloy 800		DIN (PN10) (PN16) (PN25) (PN40) (PN64) (PN100)		(CZ) Food grade silicone (direct mounted or with capillary, -25/200 °C)	(BFS) SS 316 Backup Flange
		(P) K-Monel					(SR4) Spacer ring with 1/2" NPT flushing	
		(U) Tantalum					(SR2) Spacer ring with 1/4" NPT flushing	
		(SP) 316 with teflon protection ¹⁾					(CA) Stainless steel armored capillary ⁴⁾	
		(SJ) 316L with teflon Coating ¹⁾					(CP) Stainless steel armored capillary with PVC sleeving ⁴⁾	

1) Restricted to maximum temperature 200 °C, not available with option SR2, SR4 2) The DIN-flange facing depends on nominal size and nominal pressure

How to order

Process connection	Type	Diaphragm capsule material	Bottom housing material	Instrument connection	Rating	Flange facing	Filling fluid	Option
15	DF22	S	L	14T	300	RF	CK	CA1.0

Precision Mass Products Pvt. Ltd.

Plot No.: 2306, G.I.D.C. Chhatral, Ta: Kalol, Dist.: Gandhinagar, Chhatral 382 729, Gujarat, India.

Telephone: +91-2764 233681/82/83

Email: sales@precisionmass.com

Fax: +91-2764-233440

www.precisionmass.com

- North Zone : sales.delhi@precisionmass.com
- East zone : sales.kolkata@precisionmass.com
- West zone : sales.mumbai@precisionmass.com
- South zone : sales.chennai@precisionmass.com