

High Displacement Diaphragm Seal

Model DF25

ASME B40.100

Features

- High displacement of diaphragm
- Suitable for instruments with large displacement actuators
- Metal diaphragms with Teflon gasket
- Interchangeable components
- Removable top and bottom housing
- Variety of wetted parts materials

Ranges

15 psi up to 1000 psi
 1 kg/cm² up to 100 bar & kg/cm²
 100 kPa up to 10000 kPa

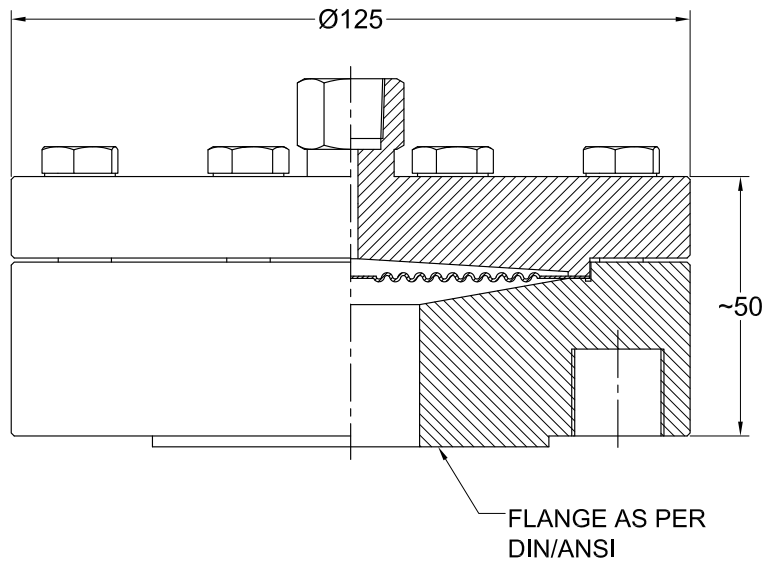
Applications

Chemical and petrochemical industry
 Machine and apparatus construction
 Offshore installations
 Pulp and paper industry
 Waste water treatment



Technical specification	DF25	
Process connection size, flanged		
ASME B16.5	ANSI	1", 1 1/2", 2", 3"
EN 1092-1	DIN	DN25, DN40, DN50, DN80, others on request
Rating	ANSI	150 lbs, 300 lbs, 600 lbs, 900 lbs, 1500 lbs
	DIN	PN10, PN16, PN25, PN40, PN64, PN100, others on request
Construction		Bolted top and bottom housing, removable for easy maintenance
Fill port		At the side with stainless steel ball and set screw
Flushing connection		Optional flushing
Flushing connection size		1/4" 1/2" NPT female
Maximum pressure		
Metal bottom housing [lbs / bar]		1500/100
Measuring principle		Diaphragm welded to top housing
Instrument connections [female]		3/8" BSP, 1/2" NPT, others on request
Material (wetted parts)		
Bottom housing		Stainless steel 316, 316L, 316 with teflon protection
Diaphragm (metal type)		Stainless steel 316L
Diaphragm (other types)		Stainless steel 316L with teflon protection
Material (non wetted parts)		
Top housing		Stainless steel 304, 316
Bolts and nuts		Stainless steel 300 series
Accuracy		Additional 0,5 % to the specified tolerance of the mounted instrument
Filling liquids (temperature range)		Glycerin (0/400 °F, -18/204 °C), Silicone (-40/600 °F, -40/315 °C), Halocarbon (-70/300 °F, -56/149 °C), Syltherm 800 (-40/750 °F, -40/400 °C), Food grade silicone (-13/400 °F, -25/200 °C), Others on request, also depending on selected material and configuration.
Mounting		Direct or with capillary
Accessories, options		NACE, Diff. pressure gauges, Diff. pressure switches, transducers, capillaries

General dimensions in mm



Order information

Process connection	Type	Diaphragm	Bottom housing material	Instrument connection	Rating	Flange facing	Filling fluid	Options
ANSI Flanged (10) 1" (15) 1 1/2" (20) 2" (30) 3" DIN Flanged (DN25) (DN40) (DN50) (DN80)	DF25	(S) 316L	(S) 316	(14T) 3/8" BSP(F)	ANSI (150) 150 lbs (300) 300 lbs (600) 600 lbs (900) 900 lbs (1500) 1500 lbs DIN (PN10) (PN16) (PN25) (PN40) (PN64) (PN100) others on request	(FF) Flat face ²⁾ (RF) Raised face ²⁾ (RTJ) Ring joint type ²⁾	(CG) Glycerin (direct mounted, -18/204 °C) (CK) Silicone (direct mounted or with capillary, -40/315 °C) (CF) Halocarbon (direct mounted or with capillary, -56/149 °C) (HA) Syltherm 800 (direct mounted or with capillary, -40/400 °C) (CZ) Food grade silicone (direct mounted or with capillary, -25/200 °C) others on request	(NH) Tagging wired (OF) Oil free (only filled with halocarbon) (YT) Stainless steel 316 top housing (SR4) Spacer ring with 1/2" NPT flushing (SR2) Spacer ring with 1/4" NPT flushing (CA) Stainless steel armored capillary ³⁾ (CP) Stainless steel armored capillary with PVC sleeving ³⁾
		(SJ) 316L with teflon Coating ¹⁾	(L) 316L (SP) 316 with teflon lined ¹⁾	(04T) 1/2" NPT(F)				

1) Restricted to maximum temperature 200 °C, not available with option SR2, SR4 2) The DIN-flange facing depends on nominal size and nominal pressure

How to order

Process connection	Type	Diaphragm capsule material	Bottom housing material	Instrument connection	Rating	Flange facing	Filling fluid	Option
15	DF25	S	S	14T	300	RF	CK	CA1.0

Precision Mass Products Pvt. Ltd.

Plot No.: 2306, G.I.D.C. Chhatral, Ta: Kalol, Dist.: Gandhinagar, Chhatral -382729, Gujarat, India.

Telephone: +91-2764 233681/82/83

Email: sales@precisionmass.com

Fax: +91-2764-233440

www.precisionmass.com

- North Zone : sales.delhi@precisionmass.com
- East zone : sales.kolkata@precisionmass.com
- West zone : sales.mumbai@precisionmass.com
- South zone : sales.chennai@precisionmass.com